

UC Import Work

Mass import folders and documents

For iManage 10



Import multiple Documents and folders

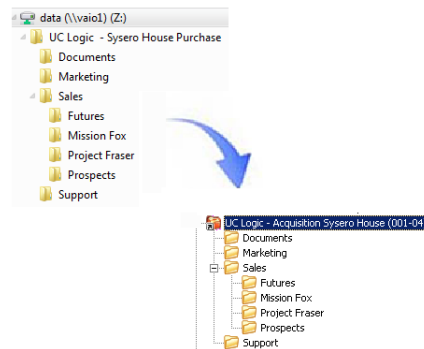
UC Import Work operates as a stand alone application, simplifying the process of importing multiple files and folders straight into iManage Workspaces.

This utility runs as a stand alone application menus and will automatically create new folders as required.

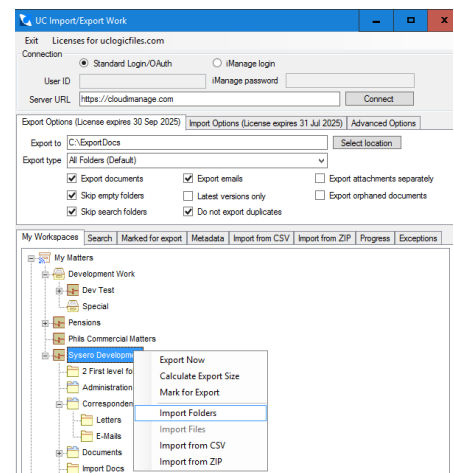


Mass import multiple documents and directories

With UC Import Work it is now possible to import multiple folders and documents directly into iManage workspaces and retain the folder structure



Imports can be done direct from file systems or by using a CSV file to provide metadata and automatically locate the correct workspace from the CSV data.



Key Features

- Imports folders and subfolders directly into existing workspaces/folders
- Imports multiple folders/subfolders and documents at the same time
- Stand alone application
- Imports from CSV files
- Imports from ZIP files
- Import into multiple versions

Requirements

- iManage Cloud
- On Premises iManage 10 server
- iManage 10 Desktop client

Document Management experts

Email: info@uclogic.com

Web: www.uclogic.com

