

UC Export Folders

Version 1.4

for Worksite 8.x



The graphic shows an orange folder icon with a blue arrow pointing to a file explorer window. The file explorer displays a tree structure of folders: Documents, Marketing, Sales, Futures, Mission Fox, Project Fraser, Prospects, and Support. Below the file explorer is the UC LOGIC logo.

UC Export Folders

**Exports workspace,
tabs, folders and
documents**

**for FileSite 8.x and
Desksite 8.x**

www.uclogic.com

- Exports folders and subfolders directly from workspaces, tabs and folders
- Filter documents and email messages
- Integrated into Filesite and Desksite clients

© UC Logic Limited 2000-2009

Contents

1. Support.....	3
2. Installation	4
3. Configuration	5
4. Usage.....	6

1. Support

For support, please contact support@uclogic.com

2. Installation

First ensure all Worksite clients are closed. This includes Outlook, Desksite and any integrated applications (e.g. Word, Excel, Powerpoint, Acrobat)

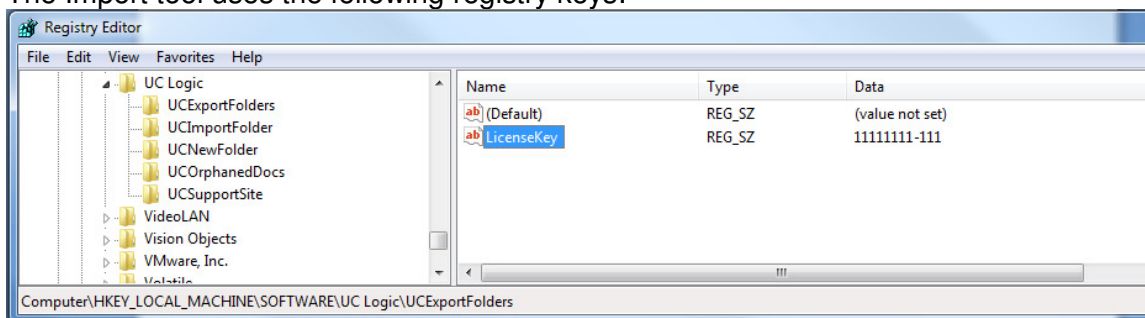
The installation process updates registry keys in HKEY_LOCAL_MACHINE, so you need to install the application as a user that has rights to update this part of the registry.

Run the setup.exe and follow instructions

When prompted for the licence key, enter the supplied code. If you enter any other code, you will install a trial version only. The trial version can be changed to a full version at a later date by adding the full licence code. Instructions on how to do this will be supplied with the licence code.

3. Configuration

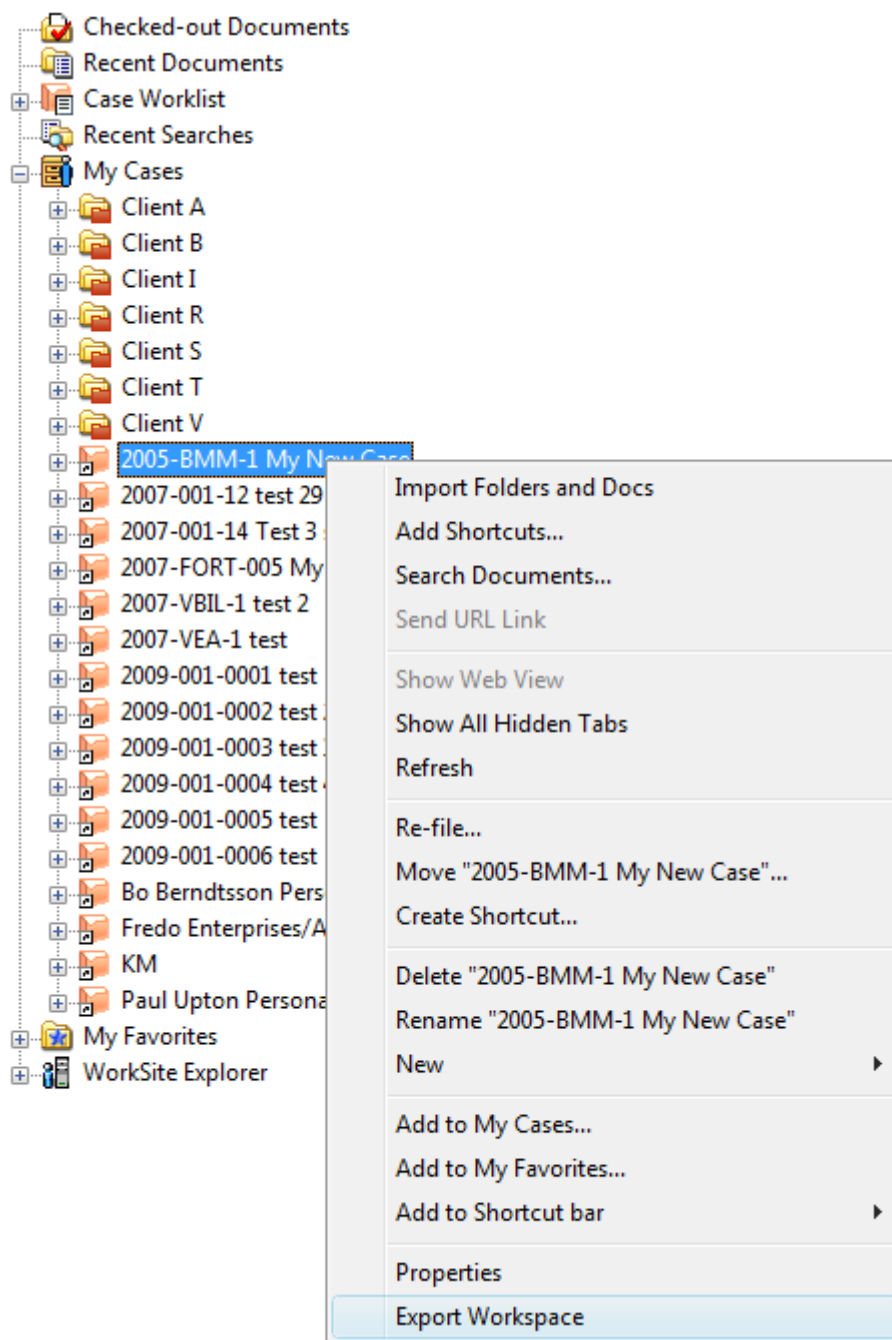
The Import tool uses the following registry keys:

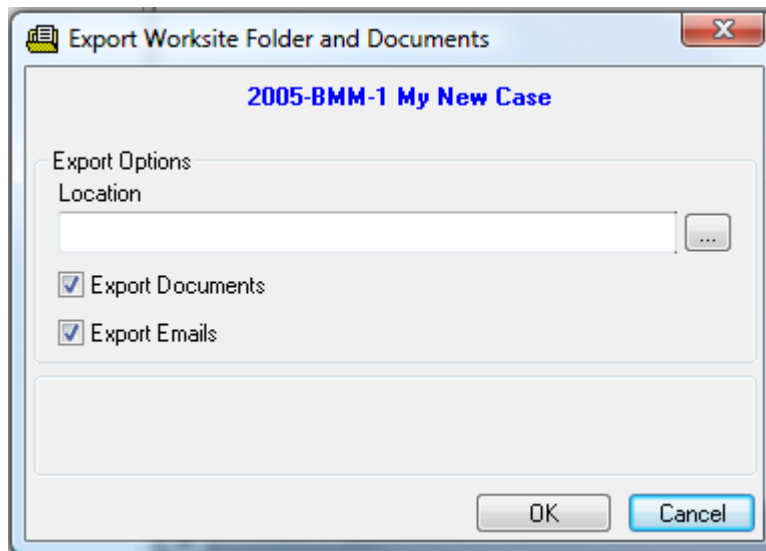


Registry Key	Description
LicenseKey	License key, any number other than the proper code will result in the application running in trial mode

4. Usage

Restart Outlook/Desksite and the menu should now be available when right clicking on a Workspace, tab or document folder





Select the location for the export and check the options to export document and/or emails.

The following applies when exporting folders:

- Files will be exported in the same structure as appears in the folders.
- Filenames will use the document description from the document profile.
- Be careful if you are exporting a large number of nested folders, as there may be an operating system limit to length of the path and filename that can be created. If this limit is reached the file will not be exported.