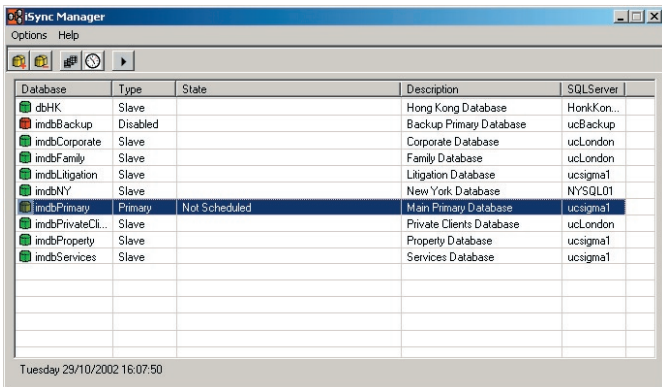


iSync

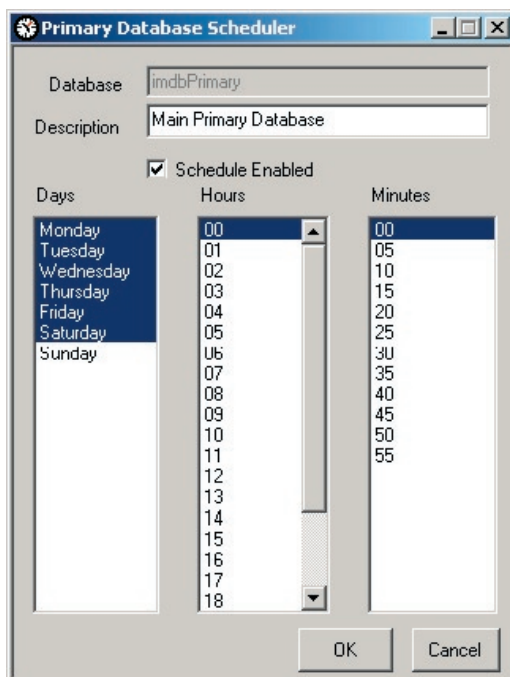
iManage Database Replicator

Managing multiple iManage databases is often a time consuming process. Each amendment would normally need to be made to each individual database. This is not only a long process but can introduce inconsistent data between different databases.

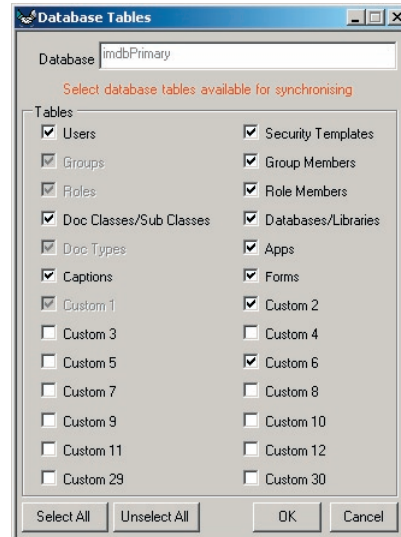


iSync replicates iManage database administration data, using a designated 'primary' database. This 'primary' database is updated using standard iManage database administration tools, then iSync takes over to replicate this data to all other 'slave' databases.

The replication event can be initiated manually or scheduled using the integrated scheduler routine. This allows fully unattended replication to take place at 'quiet' times for the network.



Individual tables can be selected to be either available or unavailable for synchronising, allowing for selective updating of a databases information



Key Features

- Replicates iManage database administration data.
- Selective table replication.
- Integrated scheduler or manual operation.
- Replicates all or just selected databases.
- Minimal network traffic from local processing.
- No need to amend database structure.
- No need for complex triggers.

Supported Platforms

Windows NT 4, Service Pack 6a
Windows 2000 Service Pack 2 or above
Windows XP

Microsoft SQL Server 7.0 Service Pack 2 or above
Microsoft SQL Server 2000

iManage database version 7.x

Please note, this product does not support iManage databases prior to version 7.0. For details on availability of iSync for these version, please contact UC Logic.